

MAJOR
Drilling

Drillside GeoSolutions


by Major Drilling



Our Vision

We will be the mineral exploration and mining industry's **go-to provider of drillside orebody intelligence**, ever building on our powerful history of traditional drilling services and our future of cutting-edge technology-driven innovations.

We are committed to **integrating technologies that enhance our customers' safety, productivity, and efficiency**. We are confident our optimized services will bring value and **maximize their exploration investment** as we move into the future of mining, together.



Global Capabilities

Major Drilling is a leading **specialized drilling** company with a global presence, delivering exceptional results on the toughest sites. Leveraging our extensive experience, modern diversified drilling fleet, and commitment to **safety**, we **partner** with customers **worldwide**.

Our services include surface and underground drilling, directional drilling, dewatering, and more, ensuring quality, safety, and outstanding results. With branch locations across North and South America, Europe, Africa, Asia, and Australia, Major Drilling is equipped to meet the unique needs of every project.



OVER
700
DRILLS

MORE THAN
5000
EMPLOYEES

OPERATING ON
5
CONTINENTS

Solutions

Our offerings include our in-house suite of Trailblazer technology solutions, designed to elevate operations at the drillside. Through our partners DGI GeoScience, known for their expertise in borehole data acquisition and interpretation and KORE GeoSystems, known for providing precision-driven technology designed to optimize and simplify your workflow, we now offer advanced technology and solutions at the drillside that are driving industry change for the benefit of our clients.

MAJOR
Drilling



- **Rock5** drillside data analytics system improves safety and productivity
- **SafeGrip** automated rod handling technology advances drill safety and efficiency
- Our **MTB portal** provides access to real-time reports and dashboards
- The **AquaLink** remote water pump system conserves water and optimizes flow control



- DGI specializes in **data collection** for **evidence-based decisions** at the drillside
- **Orebody imaging** available earlier with complete, accurate detail
- Employs the **best instruments, methodology, and interpretation** of borehole survey data
- Offers additional **geological consulting services** to provide deeper insights



- KORE **enhances operational efficiency** through the **rapid and automated processing** of core logging, powered by **Artificial Intelligence**
- **Consistent delivery** of uniform, standardized results
- Kore's services enable **real-time, remote access to results**, fostering collaboration across global teams



These offerings from Major Drilling's Trailblazer suite of solutions are designed to enhance the efficiency, safety, and sustainability of drilling projects.



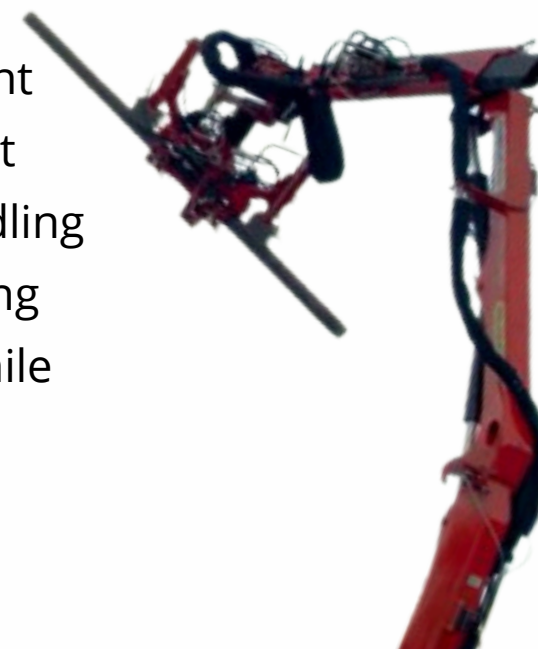
Rock5

Rock5

Our advanced Rock5 technology optimizes drill performance and safety. With adaptability to various drill models, it offers an in-house designed dashboard that tracks drill function pressures, water usage and much more.

SafeGrip

Our in-house rod handler solutions offer advanced safety, providing equipment and capabilities that ensure secure handling and operation during drilling activities while maintaining productivity.



AquaLink

A cutting-edge solution for water management in drilling projects, AquaLink enhances water usage efficiency and sustainability.



MTB Mobile + Portal

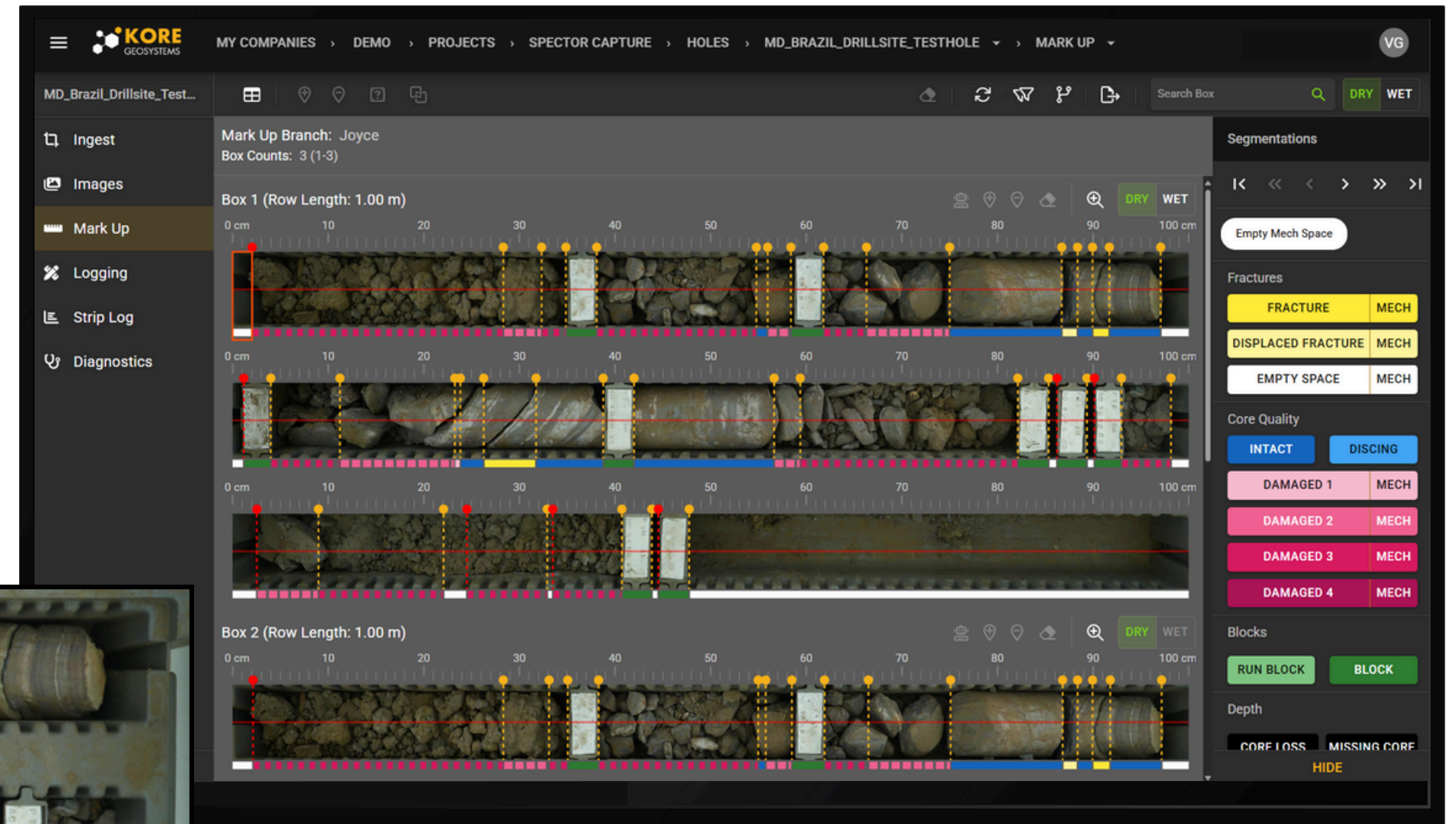
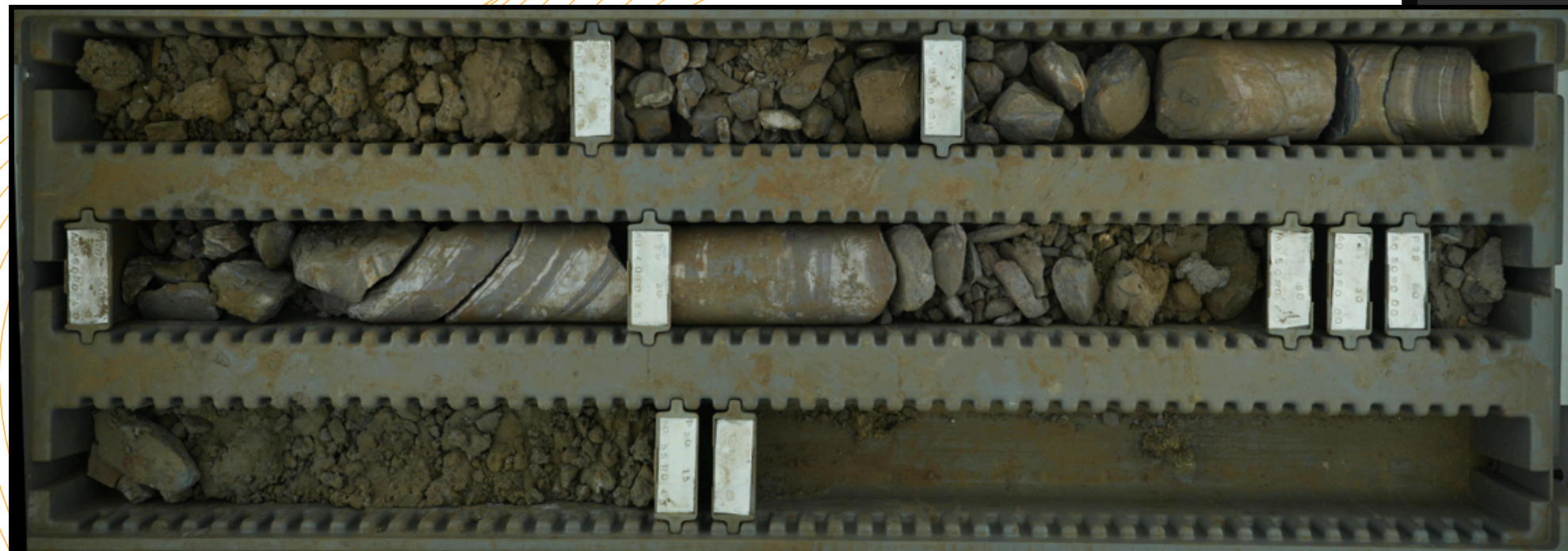
MTB Mobile captures daily drill reports electronically from the field and submits them directly into our Time & Billing system. Our Portal then provides access to these reports in real-time.





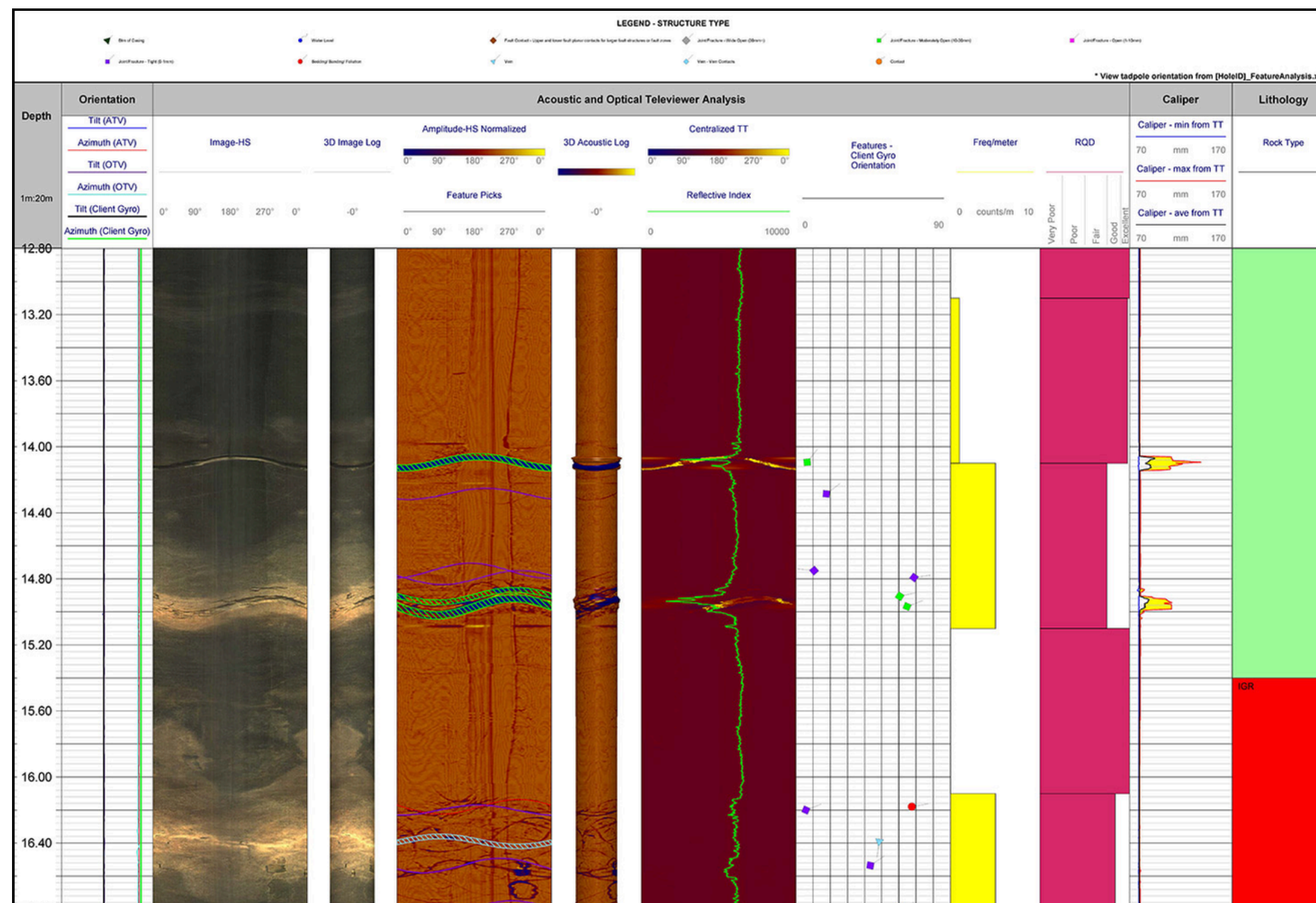
With imaging captured drillside at Major Drilling customer projects, KORE Geosystems enhances the value extracted from geological data. This collaboration leverages intelligently designed integrated hardware and software solutions, powered by **Artificial Intelligence**, to provide comprehensive support for mining operations.

- Core Scanning
- Spector Geo
 - Artificial Intelligence Assisted Mark Up
 - Geological Logging with predictive Artificial Intelligence
- Spector Ingest
 - Image Management
 - Import both new and historical images for interpretation



- **Orebody Imaging**
- **Geophysical Data**
- **Hydrogeological Data**
- **Directional & Hole Inspection**

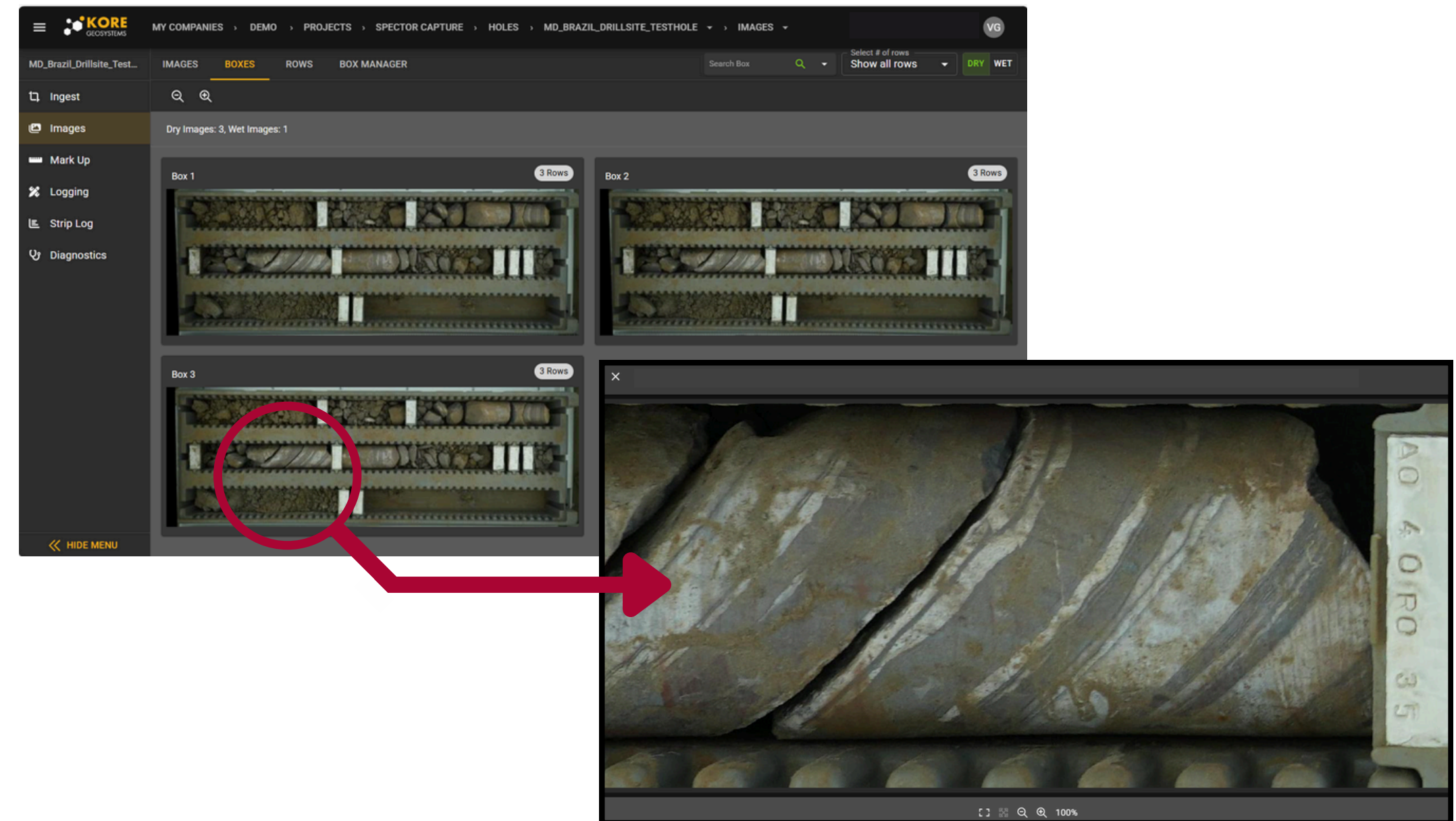
- **Stress Estimation**
- **Off-Hole Structure Investigation**
- **Geological Consulting**



IN DEVELOPMENT



Currently in development and recently deployed for testing:
The Drillside Imaging Unit





**Drillside
GeoSolutions**

MAJOR
Drilling

Questions?

Thank you!

Website

www.majordrilling.com/geosolutions

