

# MAJOR Drilling TRAILBLAZER



# Introduction

## TrailBlazer Rock5

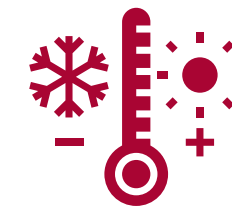
**We're optimizing drill performance with our advanced Rock5 technology.** Designed to train our new drillers faster, the Rock5's real-time data acquisition capabilities generates a digital co-pilot with drilling recommendations to optimize performance, resulting in more rock in the box with each shift.



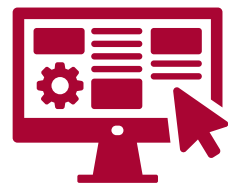
# Rock5 Key Features



Provides real-time data, providing insight on driller operations



Built for all climates; from -30°C to +65°C (-22°F to +149°F)



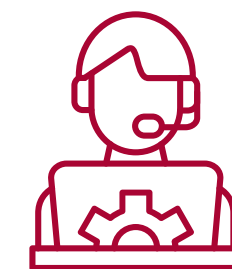
User-friendly interface; compact design; adaptable to various drill models and drilling needs



Remote software updates; designed to accommodate regular updates and new features



Flattens training curve for new drillers; offers recommendations to optimize drilling performance for all



Mobile command center provides a live view of drill performance for remote, real-time support



Provides a daily record of drilling operations



Improves maintenance strategies and maximizes tool life



# Who Benefits from Rock5?

**Rock5** boosts safety and efficiency for crews, offers clients data-driven insights and top-notch performance, and sets new industry standards with innovative and transparent practices.

## Our Crews

The Rock5 system **revolutionizes the training process** for our drill crews by significantly speeding up training time and flattening learning curves. It **empowers drillers of all experience levels** to optimize their performance from day one. By leveraging **advanced analytics and intuitive design**, Rock5 ensures that our teams are well-equipped to handle the demands of modern drilling operations.



## Our Clients

With its advanced analytics and **real-time data** capabilities, Rock5 optimizes drilling performance, allowing for precise and efficient operations. This results in **increased productivity** and **faster turnaround times**, ensuring that our clients receive the highest quality results in the shortest possible time.



## The Drilling Industry

With its cutting-edge technology and real-time data insights, Rock5 ensures optimal drilling efficiency and provides unparalleled **insights into drilling operations**. This innovative approach not only enhances productivity but also fosters a **culture of transparency and continuous improvement** within the industry.



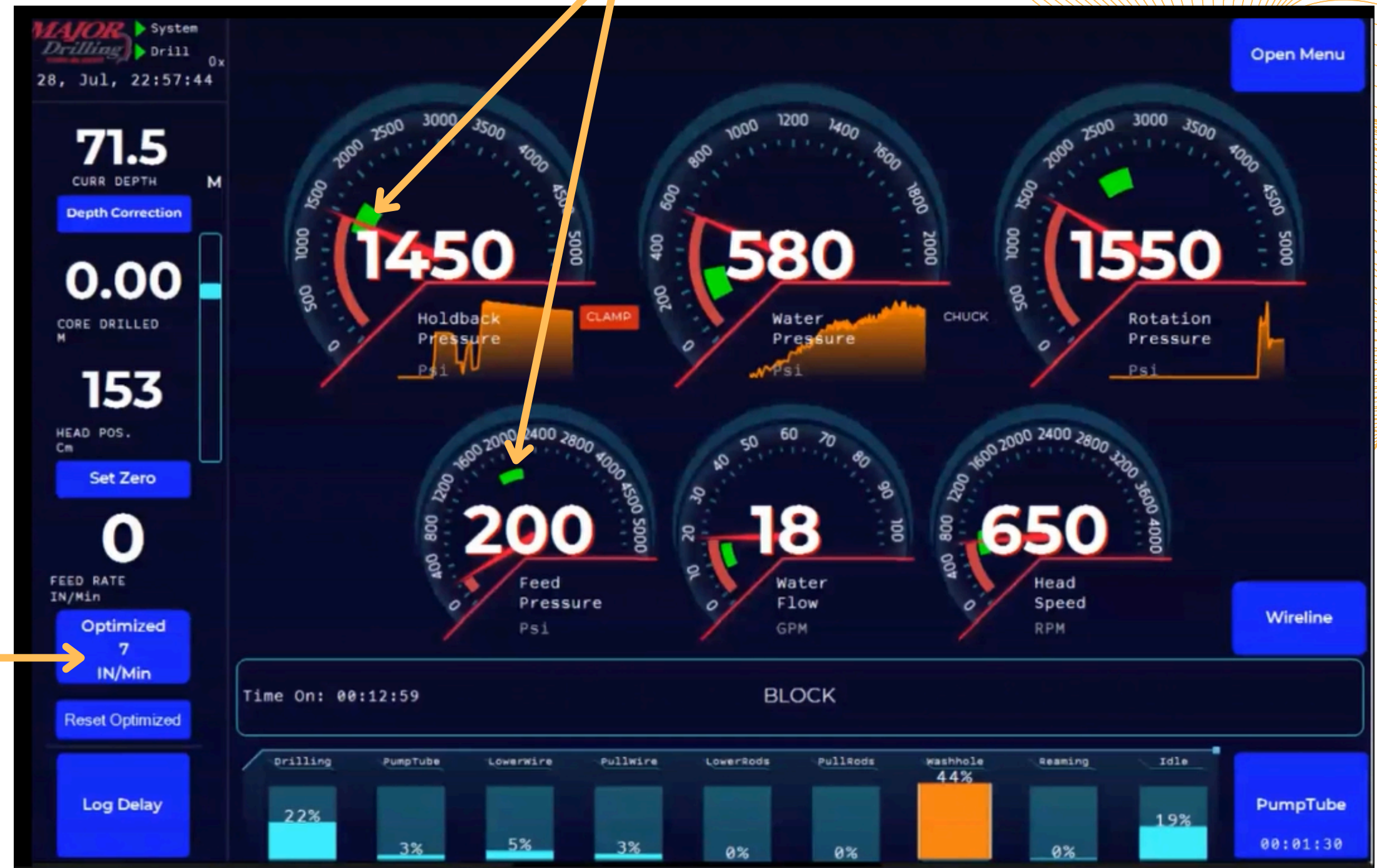
# Dashboard Metrics

## Metrics Displayed:

Holdback Pressure  
Feed Rate & Pressure  
Water Flow & Pressure  
Rotation Pressure  
Head Position & Speed  
Current Depth  
Core Drilled

Calculated optimal  
penetration rate

Targeted drilling  
parameters to achieve  
optimal penetration rate



# Live Data Access



	Number	Type	Status
<input type="checkbox"/>	036-011	LF230	Offline <span>●</span>
<input checked="" type="checkbox"/>	036-012	LF230	Online <span>●</span>
<input type="checkbox"/>	036-014	LF230	Online <span>●</span>
<input type="checkbox"/>	036-015	LF230	Offline <span>●</span>
<input type="checkbox"/>	036-017	LF230	Offline <span>●</span>
<input type="checkbox"/>	036-018	LF230	Offline <span>●</span>
<input type="checkbox"/>	10002	LM90	Online <span>●</span>
<input type="checkbox"/>	10003	LF90	Online <span>●</span>
<input type="checkbox"/>	10017	AVD 6100	Online <span>●</span>

**Monitor drilling metrics, drill state, and drilling progress on multiple drills to gain valuable insights into operations while off-site with remote access to live data through our Drill Data Dashboard built into MTB Portal.**

# Rock5 In the Field



# Trailblazer Solutions Suite

These other offerings are designed to enhance the efficiency, safety, and sustainability of drilling projects.



## AquaLink

A cutting-edge solution for water management in drilling projects, AquaLink enhances water usage efficiency and sustainability.



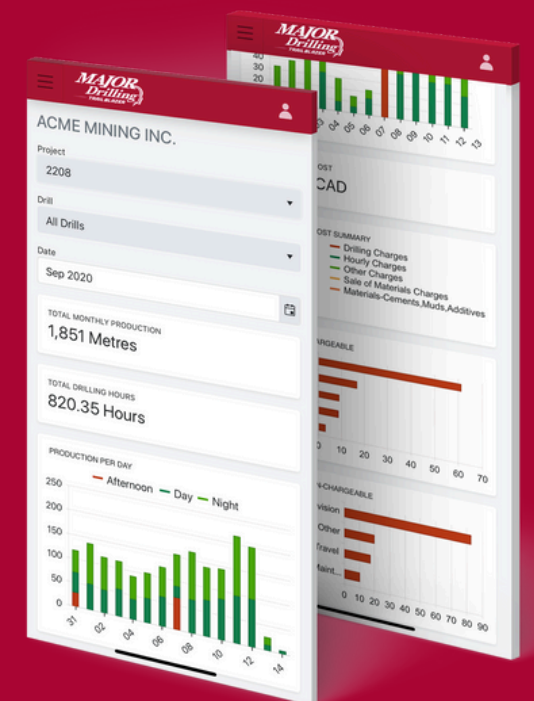
## SafeGrip

Our in-house rod handler solutions offer advanced safety, providing equipment and capabilities that ensure secure handling and operation during drilling activities.



## MTB Mobile & Portal

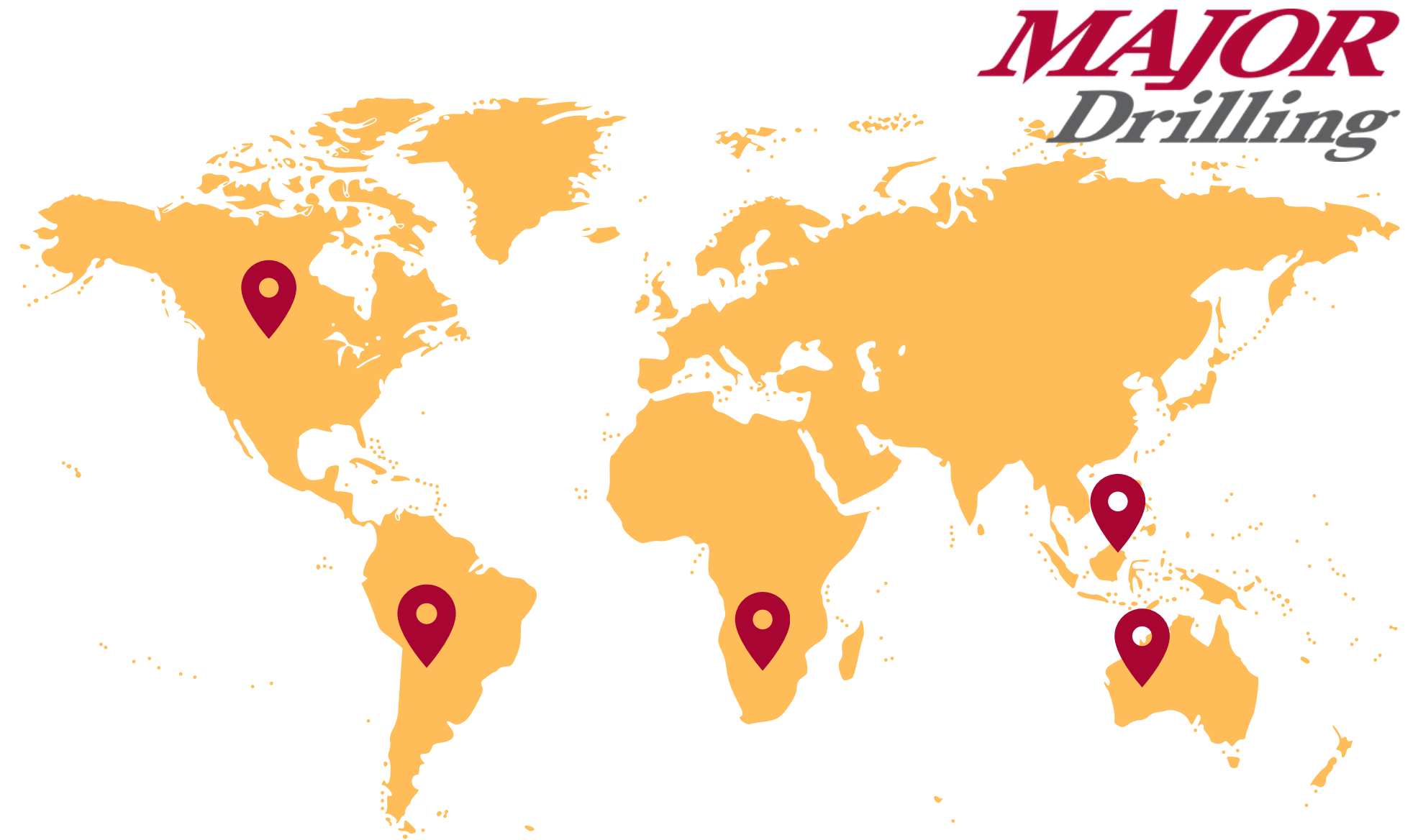
MTB Mobile captures daily drill reports electronically from the field and submit them directly into our Time & Billing system.



# Global Capabilities

Major Drilling is a leading **specialized drilling** company with a global presence, delivering exceptional results on the toughest sites. Leveraging our extensive experience, modern diversified drilling fleet, and commitment to **safety**, we **partner** with customers **worldwide**.

Our services include surface and underground drilling, directional drilling, dewatering, and more, ensuring quality, safety, and outstanding results. With branch locations across North and South America, Europe, Africa, Asia, and Australia, Major Drilling is equipped to meet the unique needs of every project.



OVER  
**700**  
DRILLS

MORE THAN  
**5000**  
EMPLOYEES

OPERATING ON  
**5**  
CONTINENTS



# Questions?

## Thank you!

[www.majordrilling.com/geosolutions](http://www.majordrilling.com/geosolutions)