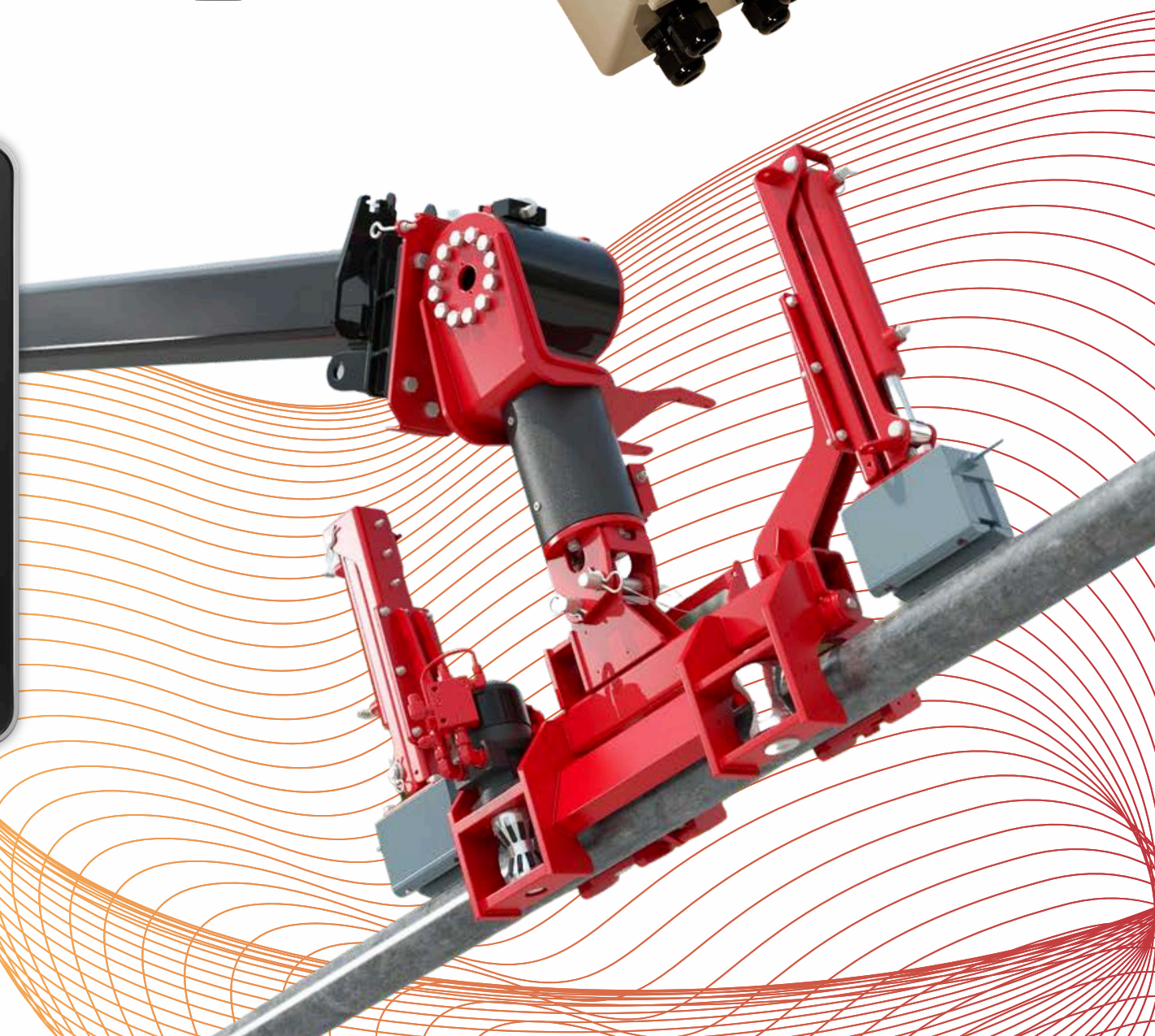


# MAJOR Drilling TRAILBLAZER





# Introduction

## TrailBlazer Rock5

**We're optimizing drill performance with our advanced Rock5 technology.** Designed to train our new drillers faster, the Rock5's real-time data acquisition capabilities generates a digital co-pilot with drilling recommendations to optimize performance, resulting in more rock in the box with each shift.





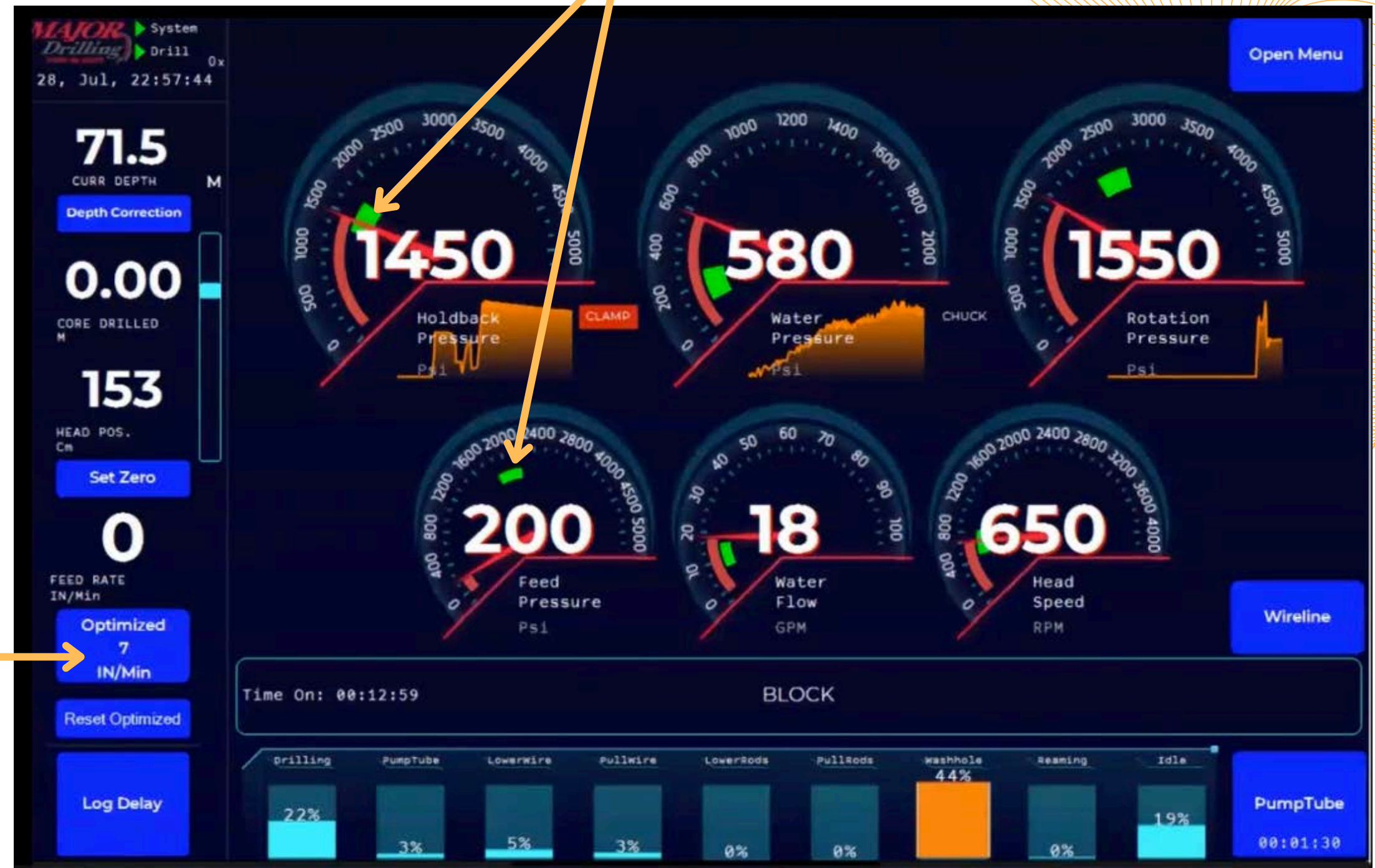
# Dashboard Metrics

## Metrics Displayed:

Holdback Pressure  
Feed Rate & Pressure  
Water Flow & Pressure  
Rotation Pressure  
Head Position & Speed  
Current Depth  
Core Drilled

Calculated optimal  
penetration rate

Targeted drilling  
parameters to achieve  
optimal penetration rate





# Live Data Access



	Number	Type	Status
<input type="checkbox"/>	036-011	LF230	Offline <span></span>
<input checked="" type="checkbox"/>	036-012	LF230	Online <span></span>
<input type="checkbox"/>	036-014	LF230	Online <span></span>
<input type="checkbox"/>	036-015	LF230	Offline <span></span>
<input type="checkbox"/>	036-017	LF230	Offline <span></span>
<input type="checkbox"/>	036-018	LF230	Offline <span></span>
<input type="checkbox"/>	10002	LM90	Online <span></span>
<input type="checkbox"/>	10003	LF90	Online <span></span>
<input type="checkbox"/>	10017	AVD 6100	Online <span></span>

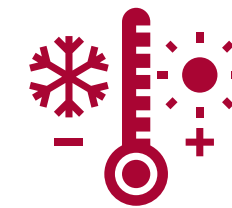
Monitor drilling metrics, drill state, and drilling progress on multiple drills to gain valuable insights into operations while off-site with remote access to live data through our Drill Data Dashboard built into MTB Portal.



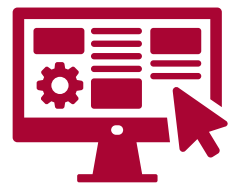
# Rock5 Key Features



Provides real-time data, providing insight on driller operations



Built for all climates; from -30°C to +65°C (-22°F to +149°F)



User-friendly interface; compact design; adaptable to various drill models and drilling needs



Remote software updates; designed to accommodate regular updates and new features



Flattens training curve for new drillers; offers recommendations to optimize drilling performance for all



Mobile command center provides a live view of drill performance for remote, real-time support



Provides a daily record of drilling operations



Improves maintenance strategies and maximizes tool life



# Rock5 In the Field





***MAJOR***  
***Drilling***

# Introduction

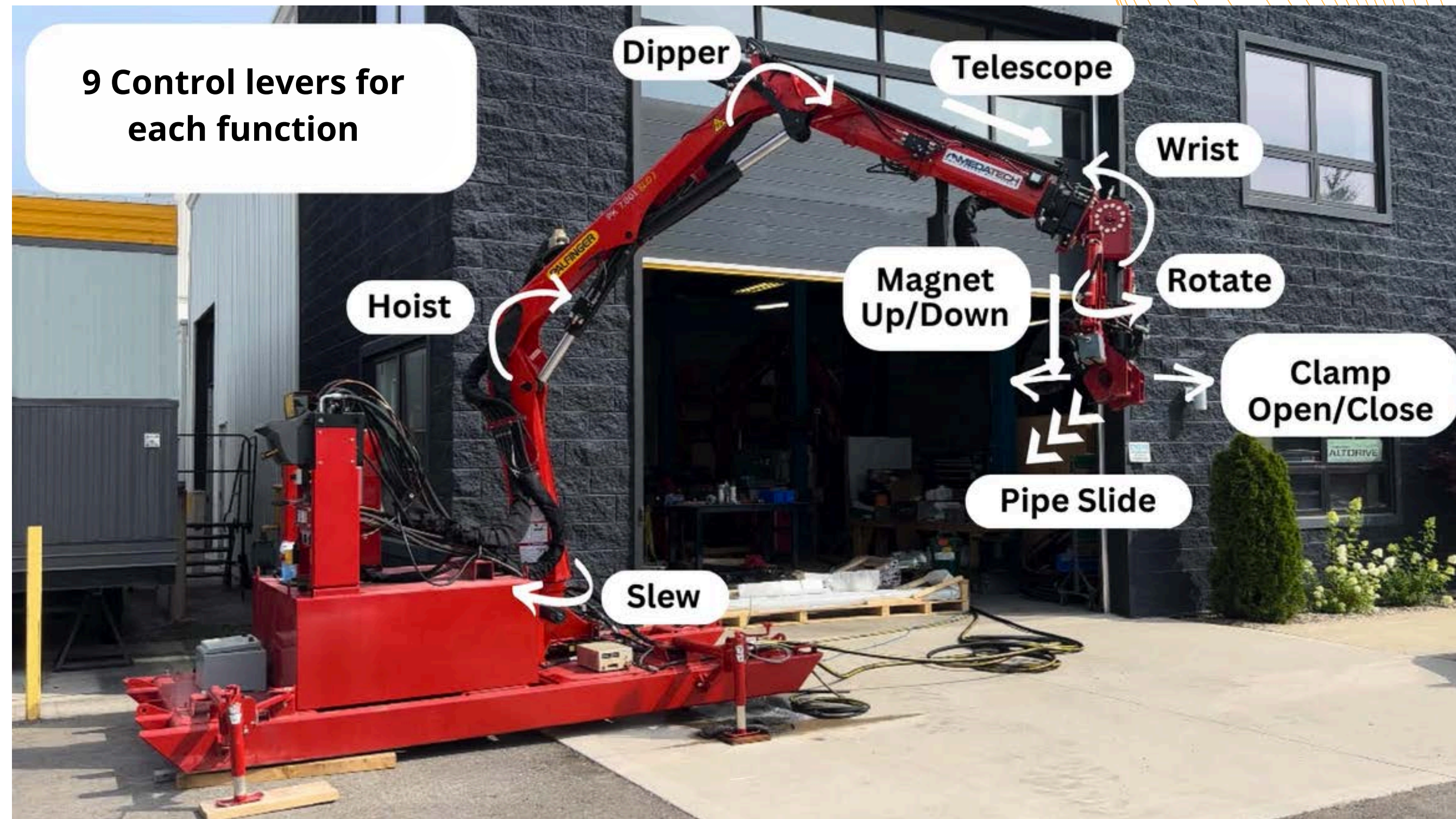
## TrailBlazer SafeGrip

**Enhanced Safety while maintaining efficiency in drilling operations.**

The SafeGrip is an innovative hands-free rod handling solution designed to enhance safety and efficiency in drilling operations, exclusive to Major Drilling.







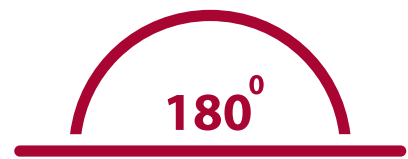


# SafeGrip Key Features

**MAJOR**  
*Drilling*



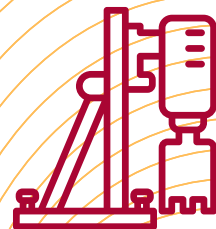
Automation Capabilities



180° versatility on seven different axes



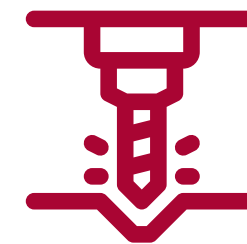
Enhanced Safety



Compatible with all rod sizes



Ability to handle uneven terrain



Adaptable to various types of exploration drills



Increased Drilling Efficiency



Carrying weight capacity of 136 kg



# Additional Hands-free Rod Handling Solutions offered by Major Drilling

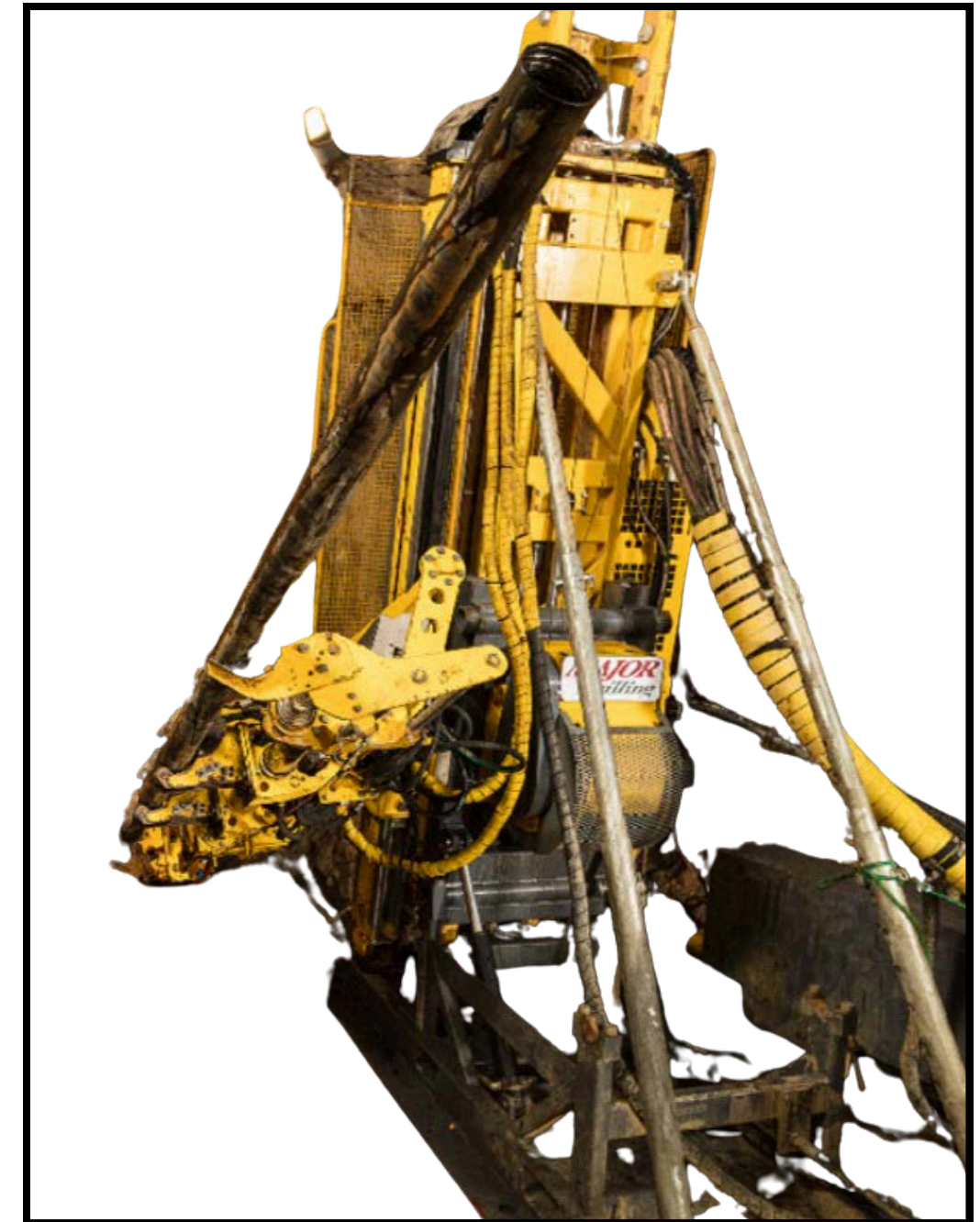
**MAJOR**  
*Drilling*



NextDrill



BLY Freedom Loader

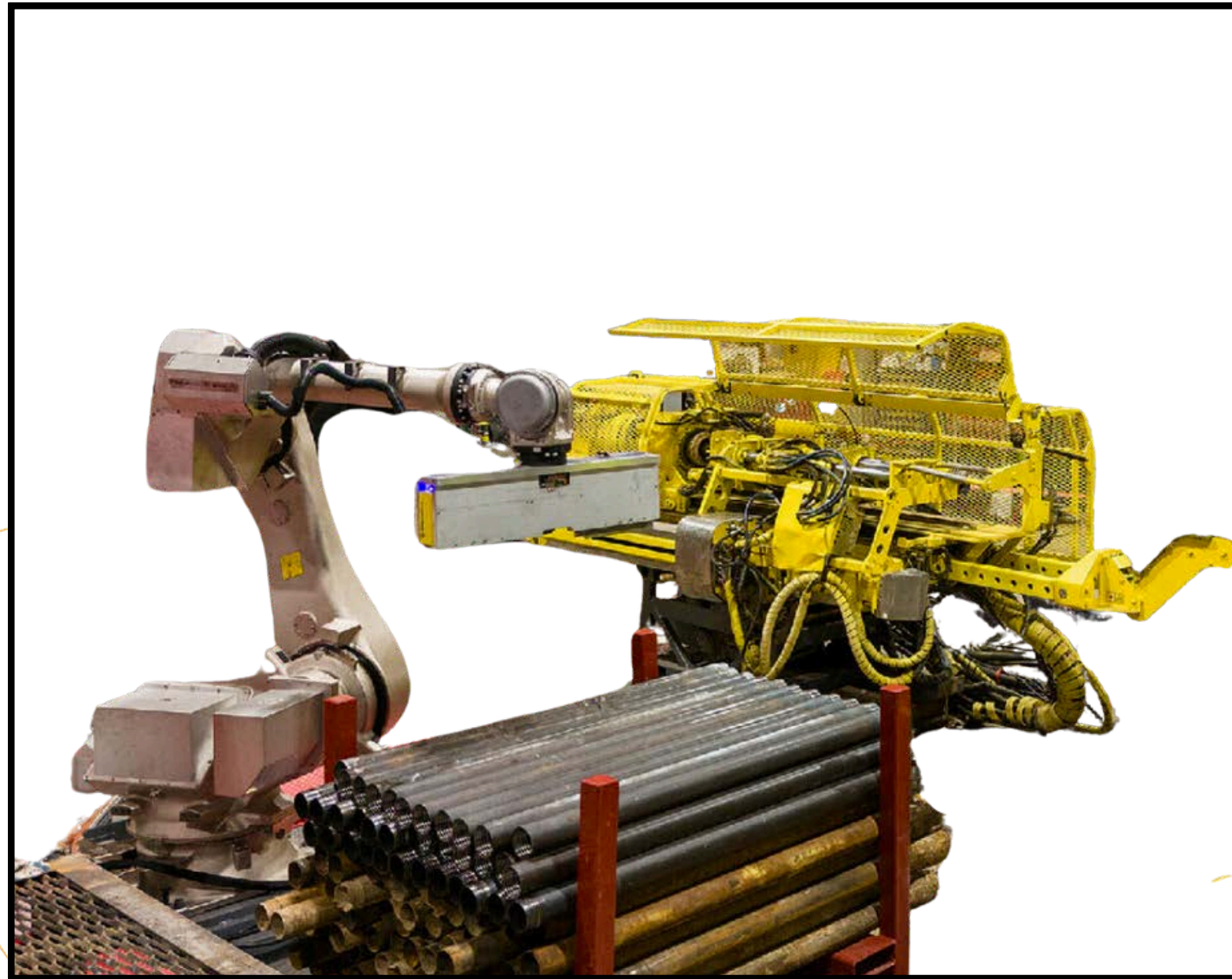


Epiroc UG drill rod handler



# Additional Hands-free Rod Handling Solutions offered by Major Drilling

**MAJOR**  
*Drilling*



UG Robot



EDM MK2 Rod Handler

...and more!



***MAJOR  
Drilling***

# Introduction

## TrailBlazer AquaLink

**We're maximizing efficiency and minimizing environmental impact**

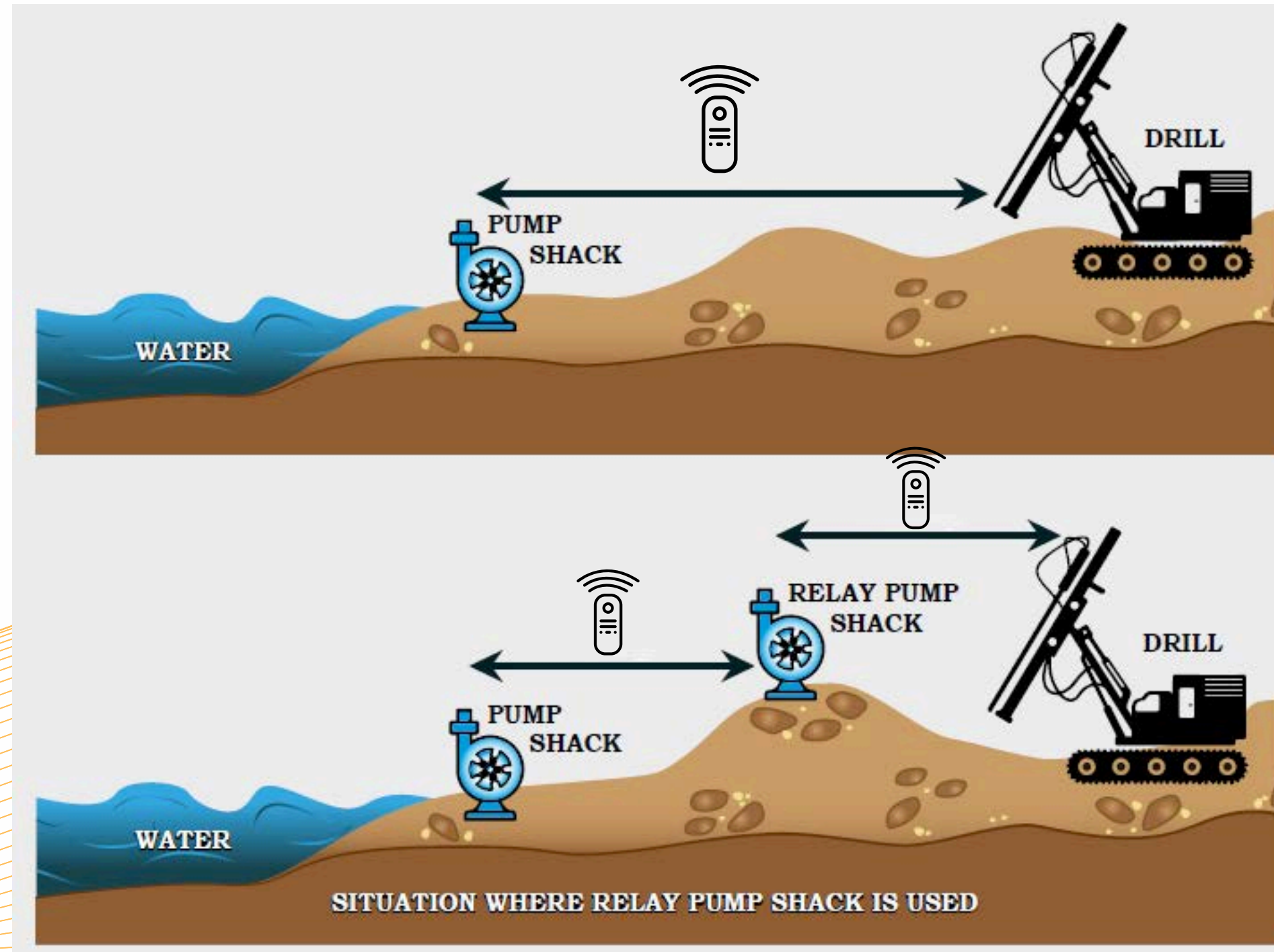
Our unique control system allows you to remotely control and monitor the state of your drill's water supply pump system, ensuring optimal water management and operational efficiency.





# How AquaLink works: Radio Signal Remote Control\*

**MAJOR**  
*Drilling*



\*Tested up to 9km in distance in even, unobstructed terrain



# Dashboard Metrics





# AquaLink Key Features

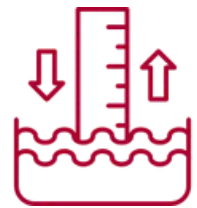
**MAJOR**  
*Drilling*



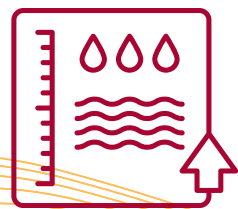
Remote adjustment of water flow in real-time



Water intake measurement from the source (keeping the totals)



Water volume at the source (keeping the totals)



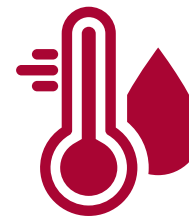
Volume recording project totals



Fuel level monitoring



Ambient temperature at the source



Water temperature at the source and destination



Water Pressure at the source to detect leak



Motor fan belt failure alarm; battery and alternator voltage alarm



Paging between shacks



# AquaLink Remote Valve

**MAJOR**  
*Drilling*

Our AquaLink Remote Valve control system is designed to adjust the volume of the delivered water from source to the drill; allowing the operator **wireless control over the amount of consumed water** over long distances. The system allows water flow to be continuous, protecting the pump from overloading. While the three-way valve enables excess water to be returned back to the source.





# AquaLink in the Field

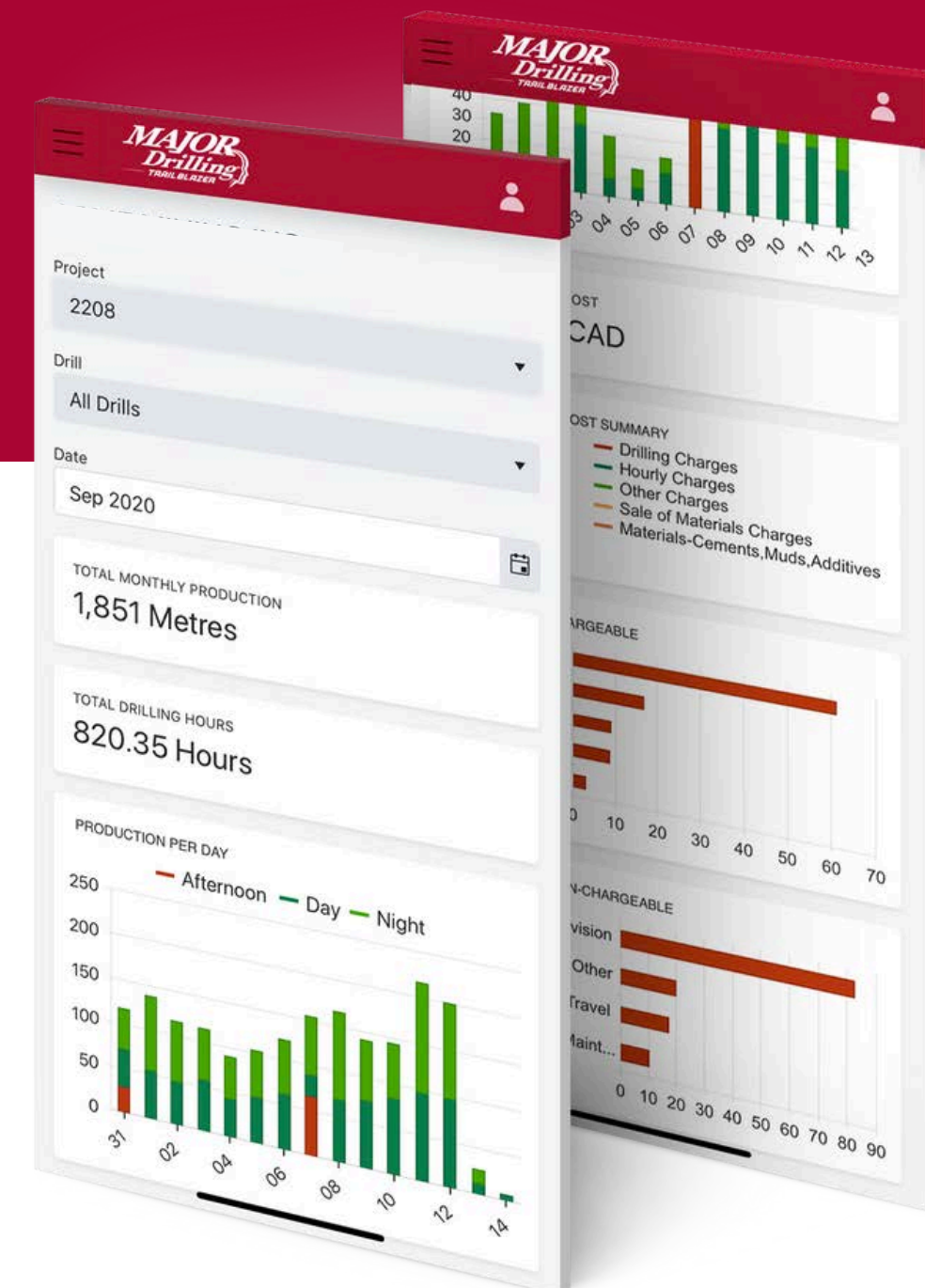




# Introduction

## MTB Portal & MTB Mobile Capturing Real Results On *and* Offline.

MTB Mobile & Portal enables crews to capture daily drilling reports electronically from the field and submit them directly into our Time & Billing System for access to real-time data available anywhere. This allows clients to review, comment, and approve details at the touch of a button.





# Production Dashboard Metrics

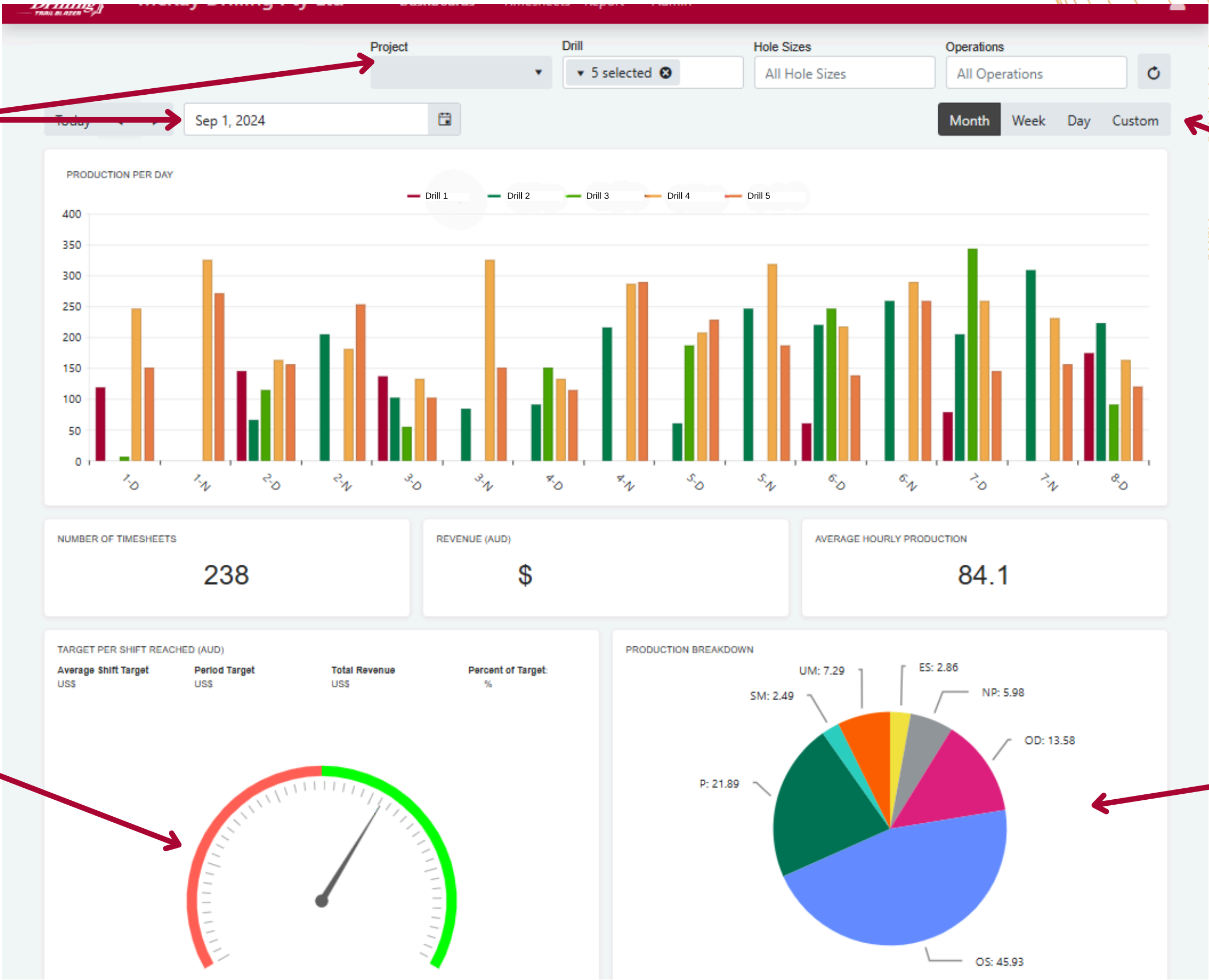
***MAJOR***  
***Drilling***

Customize by Date,  
Project, and Drill

View reports by Month,  
Week, Day, or a Custom  
date range

Target per Shift  
Reached

Production Breakdown





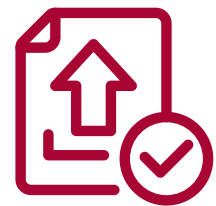
# MTB Mobile & Portal Key Features



Customize Your Reports



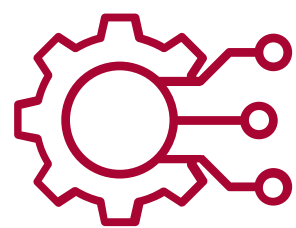
Track Key Metrics for Operations



Submit Data Electronically for Instant Access



Enter Data from Remote Locations



API capabilities allow information to be fed to any other platform



Access MTB Portal from any device





**Questions?**

Thank you!

[www.majordrilling.com/geosolutions](http://www.majordrilling.com/geosolutions)